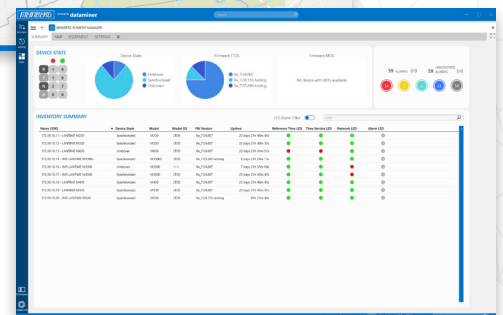
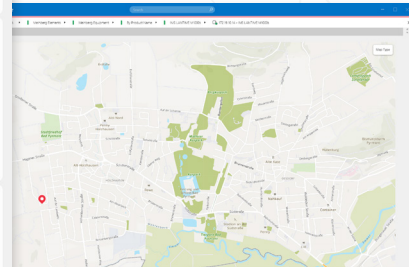
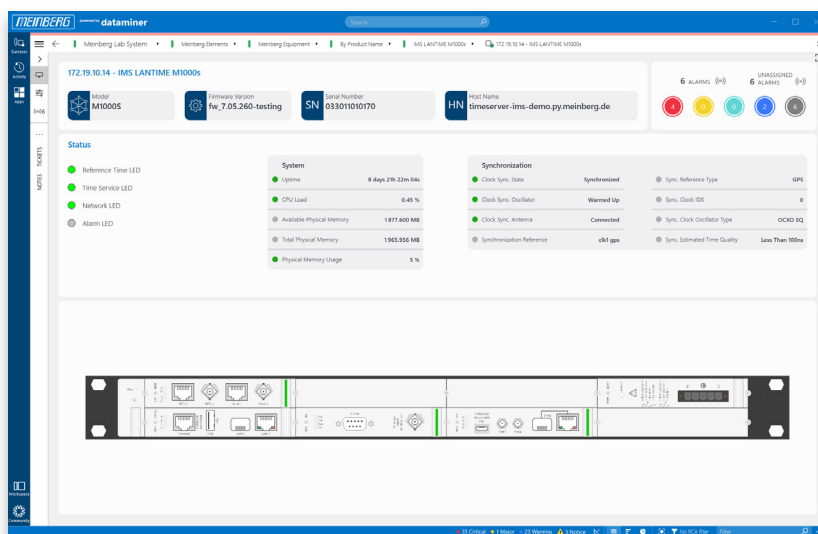


mbgNMS

Meinberg Network Management System



Manage, Control, and Monitor your Entire Meinberg Ecosystem

Jointly developed in a partnership between Skyline Communications and Meinberg, this centralized platform automatically detects, provisions, and monitors all your Meinberg applications. mbgNMS is designed as a Network Management Solution based on Skyline's DataMiner Network Management System and is specially tailored to Meinberg's unique range of synchronization products.

Belgium-based Skyline Communications is the leading international manufacturer of a multi-vendor network management and monitoring solution for the HFC broadband, satellite, IPTV, and broadcasting sectors.

DataMiner, which acts as the underlying core of mbgNMS, is a Network Management Platform that has already won a number of prestigious awards. DataMiner can be integrated end-to-end in existing network infrastructure and has been successfully used by many leading broadcasters, cable operators, and IPTV providers to manage their complex infrastructure more conveniently.

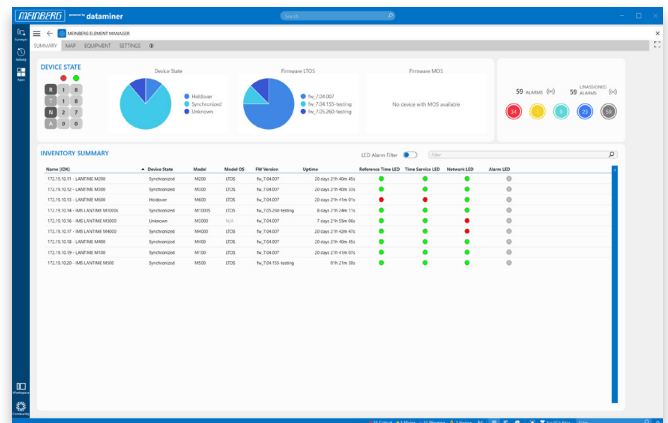
DataMiner is based on a wholly open architecture and supports over 5,500 drivers from almost every leading device and system vendor. It offers a vast range of features such as extensively customizable alerts, email and SMS messaging, long-term trend monitoring, professional reporting, advanced automation, smart correlation, root cause analysis, service management, real-time SLA monitoring, user-definable process flows, spectrum monitoring, mobile system access, CPE management, and much more.

The underlying DataMiner platform has been reconfigured to meet the unique needs of Meinberg systems, with the Meinberg Element Manager plugin integrated into the DataMiner framework providing all of the Meinberg-specific functionality. With the extensive feature set of mbgNMS, you can efficiently manage all of your Meinberg devices, wherever they are physically, and however big your network may be.

Key Functionalities

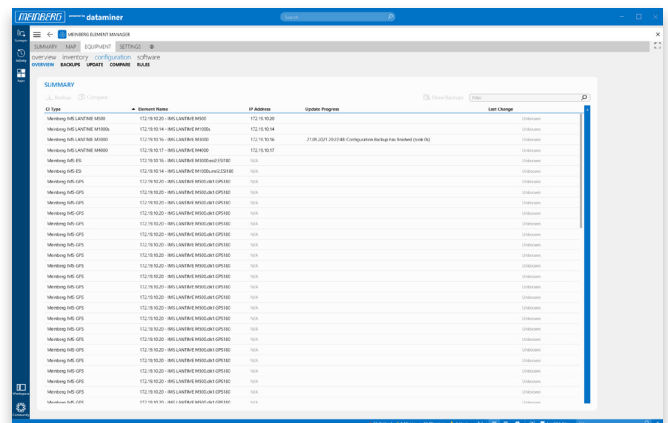
Inventory and Device Management

- | Auto-discovery function via network scan
- | Overview of models and modules in use
- | Serial numbers and firmware status



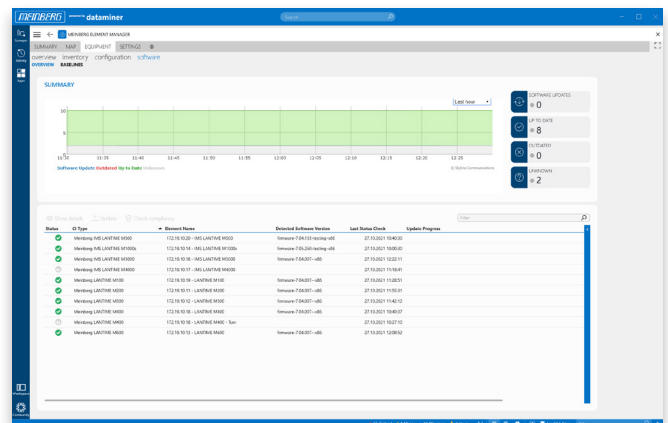
Configuration Management

- | Backup and restore configurations
- | Modify parameters on one or multiple devices
- | Transfer configurations from system to system when replacing a device



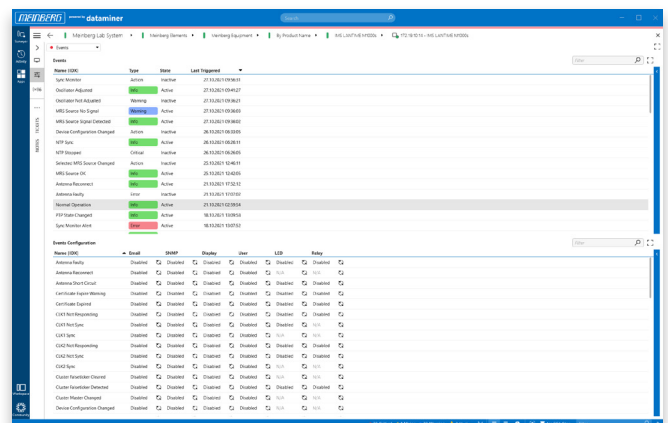
Firmware Management

Roll out firmware updates to multiple devices



Monitoring

- | Query status values for synchronization, network, etc.
- | Definition of custom alarm rules for customizable alerts (alarm templates)
- | Trend values (visualization of values such as CPU load, number of satellites locked in, etc.)



Supported Devices

Non-Modular Systems

LANTIME M100, M200, M300, M400, M600, M900

Modular Systems

IMS LANTIME M500, M1000/M1000S, M2000S, M3000/M3000S, M4000, XHE-Rb Chassis

IMS Modules

CPU, ACM, PWR, CLK (GPS, GNSS, PZF, TCR), RSC, HPS, VSG, FDM, LIU, ESI, VSI, SCG, CPE, BPE, PIO, REL, LNE, MRI, LNO

Hardware Requirements

Server Hardware

The server hardware must meet the following requirements:

- Processor: 8 cores; CPU passmark > 10K
- Memory: 32 GB
- Hard disk: 250 GB SSD + 1 TB disk for Cassandra database
- Network: 100 Mbps Throughput
- Latency: < 50 ms

Client Hardware

The client hardware must meet the following requirements:

- Processor: Min. 4 physical cores and 5000+ PassMark CPU benchmark
- Memory: 8–16 GB DDR4 RAM
- Graphics memory: 512 MB

Software Requirements

Server OS

The server OS must meet the following requirements:

- Operating system: Windows Server 2012 R2 or higher
- Microsoft .NET Framework 4.6.2 or higher

Client App

The client app for the Meinberg Element Management System is available as a standalone application that can be installed on any computer that meets the following requirements:

- Operating system: Windows 8 or Windows 10
- Microsoft .NET Framework 4.6.2 or higher

Get In Touch

Our sales team will be glad to assist you.

+49 5281 9309-0

sales@meinberg.de

Meinberg Funkhuren GmbH & Co. KG
Lange Wand 9
31812 Bad Pyrmont, Germany