

Technical Information

Operating Instructions

**DU70**

## **Impressum**

Werner Meinberg  
Auf der Landwehr 22  
D-31812 Bad Pyrmont

Phone: ++49 52 81 - 9309-0  
Fax: ++49 52 81 - 9309-30

Internet: **<http://www.meinberg.de>**  
Email: **[info@meinberg.de](mailto:info@meinberg.de)**

September 3, 2004

# Inhaltsübersicht

Impressum .....	2
General Information about DCF77 .....	5
Features of the DU70 .....	6
Installation .....	6
Power Supply .....	6
DU70 as Stand Alone Clock .....	7
DU70 as Slave Clock .....	7
Synchronisation by serial Time Strings: .....	7
Synchronisation by Pulses per Minute: .....	7
DU70 as Radio Clock .....	8
Mounting the Antenna .....	9
Usage of the Buttons MENU and SET .....	10
The Menus in Detail .....	10
Time & Date .....	10
Language .....	10
Brightness .....	10
Daylight Saving .....	10
Winter/Summer Changeover .....	11
Summer/Winter Changeover .....	11
Exit .....	11
Rear View DU70 .....	12
Rear Panel Connectors .....	13
CE Label .....	13

Connection Exaples .....	14
Pin Assignments of SUB-D Connector IN .....	16
Pin Assignments of SUB-D Connector OUT .....	16
Technical Specifications: .....	17
Format of the Meinberg Standard Time String .....	18
Jumper Arrangement .....	19

# General Information about DCF77

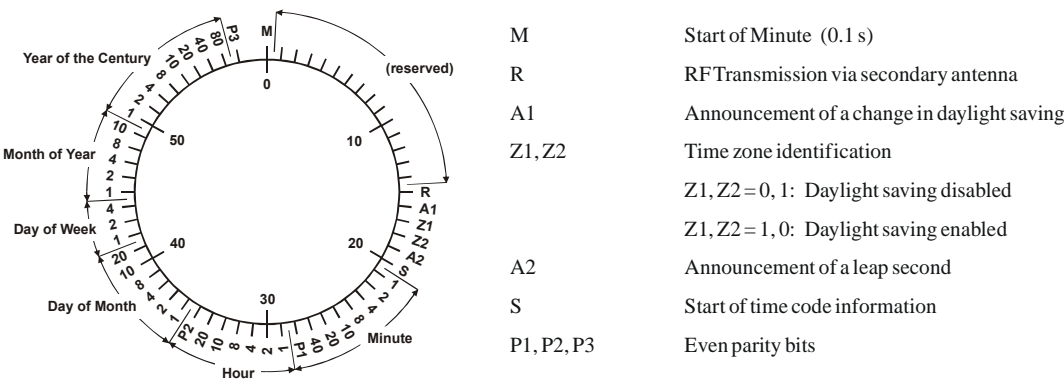
The radio remote clocks made by Meinberg receive the signal from the long wave transmitter DCF77. This long wave transmitter installed in Mainflingen near Frankfurt/Germany transmits the reference time of the Federal Republic of Germany. This time reference is either the Central European Time (Mitteleuropäische Zeit, MEZ) or the Central European Summer Time (Mitteleuropäische Sommerzeit, MESZ). The transmitter is controlled by the atomic clock plant at the Federal Physical Technical Institute (PTB) in Braunschweig/Germany and transmits the current time of day, date of month and day of week in coded second pulses. Once every minute the complete time information is available.

At the beginning of every second the amplitude of the high precision 77.5 kHz carrier frequency is lowered by 75% for a period of 0.1 or 0.2 sec. The length of these time marks represent a binary coding scheme using the short time mark for logical zeroes and the long time mark for logical ones. The information on the current date and time as well as some parity and status bits can be decoded from the time marks of the 15th up to the 58th second every minute. The absence of any time mark at the 59th second of a minute signals that a new minute will begin with the next time mark.

Our radio remote clocks decode the highly accurate information on date and time within a wide range around Germany. So some of our clocks are installed in Bilbao/Spain as well as in the city of Umeå in northern Sweden - fully satisfying the requirements of the users. The radio remote clocks automatically switch to summertime and back. The reception of the time information is free of charge and does not need to be registered.

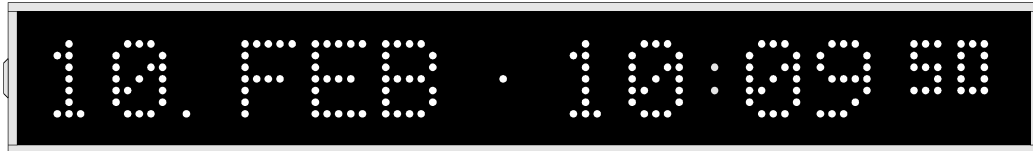
Generally it is important to position the antenna in an optimal way. It should be mounted at least 30 centimeters away from the clock unit and from solid steel. The antenna should be aligned at a right angle to the direction of the transmitter (Frankfurt).

**Figure: Decoding Scheme**



## Features of the DU70

The large display DU70 is a 50mm high LED matrix display that shows time and date 16 character wide as follows: day of month, month, hours, minutes and seconds. It is available as a free running stand alone clock, as a slave clock or as a radio clock with integrated DCF77 receiver.



*Fig.1: Front View*

The DCF variant provides automatic changeover of daylight saving. In case of supply voltage failure the on board RTC keeps the time based on XTAL for at least 10 years. English or German can be chosen as display language. The wall mounted housing of the DU70 is made of plastic coated steel sheet.

The power connector, the antenna input and the RS232/20mA interfaces provided by DU70 are accessible via connectors in the rear panel of the case.

## Installation

### Power Supply

The requested supply voltage is applied via the power cord receptacle in the rear panel. After connecting the power cord and the antenna (only DCF variant) the system is ready to operate. Time and date become visible on the display.

## **DU70 as Stand Alone Clock**

After connecting the power supply to the 230V/50Hz net the appearing time/date can be set by the two buttons in the rear panel of the case. The accuracy of the time depends on the precision of the internal quartz base.

An automatic changeover of daylight saving can be programmed as described in section "Daylight Saving".

## **DU70 as Slave Clock**

There are two possibilities of synchronisation. The DU70 can be synchronized either by serial time strings or by pulses per minute. The selection can be set by jumper JP19 on the board (see section "Jumper Arrangement").

### **Synchronisation by serial Time Strings:**

A preconnected radio clock sends the time strings to the DU70. When the radio clock stops sending time strings the DU70 continues by running on XTAL.

The data transmission occurs either:

- via RS232 or
- via 20mA current loop.

It is possible to connect several DU70s or other Displays via serial interface to one radio clock.

### **Synchronisation by Pulses per Minute:**

The DU70 can also operate as a normal slave clock. A preconnected master clock generates the minute slave line with pulse levels up to 48V. Installing the system it is necessary that the DU70s time match about  $\pm 15$  sec. with the master clocks time. Synchronisation with the master clock is indicated by a dot between date and time on the display: When the dot is visible the DU70 runs free, when the dot disappears the clock is synchronized. Synchronisation is possible only two times per hour. An automatic changeover of daylight saving can be programmed as described in section "Automatic Changeover of Daylight Saving".

## **DU70 as Radio Clock**

It is not possible to run this variant of the DU70 as a slave clock. The DSub connector (IN) at the rear panel has no effect. The DSub connector (OUT) can be connected to further DU70s or similar systems to run them as slave clocks.

An external ferrit antenna is used to receive the signal from DCF77 and supplies it to the on-board LF receiver where it is demodulated by a synchronous detector with automatic gain control. The demodulated time marks are fed to the clock's microprocessor.

The time marks from the receiver circuit are filtered and decoded by the microprocessor system. Parity and consistency checks over a period of two minutes take care for detecting errors in the received time string. The checked and decoded time is written to the on-board real time clock and spread by the interfaces. A software watchdog lets the microprocessor recover from malfunction. A power-fail comparator resets the microprocessor if the supply voltage drops below a specified threshold.

In case of supply voltage failure the on-board real time clock keeps the time powered by a lithium battery which has a live time of at least 10 years guaranteed.

After powering up the system the time kept in the real time clock is displayed immediately. A dot between the date and the time on the display indicates that the clock is running free. After synchronisation this dot disappears, however, after loss of reception for more than 6 hours the dot appears again. A further dot below the "Free Running Dot" indicates the DCF77 signal. This "Modulation Dot" appears until the first synchronisation of the clock. If the antenna is installed properly and the signal from DCF77 can be received without strong distortions, the "Modulation Dot" starts blinking exactly once per second, corresponding to the time marks from DCF77. Because of a better control an acoustic signal is added to the "Modulation Dot" for 2.5 minutes.



## **Mounting the Antenna**

Generally it is important to position the antenna in an optimal way. The antenna should be aligned at a right angle to the direction of the transmitter (Frankfurt). It should be mounted at least 30 centimeters away from the clock unit and from solid steel. A distance of several meters is recommended to all TVs or computer monitors.

In order to get the maximum signal, the antenna should be aligned carefully. If the antenna is installed properly and the signal from DCF77 can be received without strong distortions, the "Modulation Dot" starts blinking exactly once per second, corresponding to the time marks from DCF77. If this dot flashes intermediately, there is some electrical noise around which prevents the microprocessor from decoding the time message. So a better location for the antenna must be found. In case of correct reception it takes up to three minutes after power-up until the clock is synchronized and the "Free Running Dot" is turned off.

The scope of supply (only DCF77 variant) includes an active ferrite antenna for indoor mounting (AI01) and 5m of RG175 coaxial cable. When mounting the antenna outdoor the weather proof Antenna AW02 is to use.

## **Usage of the Buttons MENU and SET**

The time, the language, the brightness and the automatic changeover of daylight saving can be edited by using the buttons MENU and SET.

The button MENU is used to change over from the normal operation mode into the 'set parameters' mode and to select the different menus. The button SET is used to modify the selected menu. When leaving the menu by pushing MENU the modification is acknowledged. When no button is pushed for more than 30 seconds the DU70 goes back into normal operation mode with losing the last modification that was not acknowledged. The menus in detail are described below.

## **The Menus in Detail**

### **Time & Date**

When pressing SET in this menu the actual valid time/date of the DU70 appears in the display. With additional pressing and keeping pushed of SET the blinking digit of the time is incremented. When the digit has reached the wanted value the SET button is to release. With another brief pressure to SET the next digit begins to blink and can be incremented in the same way. Pressing MENU acknowledges the modification and changes over to the next menu.

### **Language**

When pressing SET in this menu the actual valid language of the DU70 appears in the display. Renewed pressing SET causes another language appearing. When the wanted (and available) language is displayed, the menu is to leave by pressing MENU.

### **Brightness**

The brightness of the display can be graduated in three steps. Press SET in this menu to increment an integer between 1 and 3 where 1 means the most dimmed step and 3 means the fully brightness. Press MENU to acknowledge and to leave this menu.

### **Daylight Saving**

In this menu the automatically changeover of daylight saving can be activated. Press SET in this menu to enable/disable daylight saving and press MENU to acknowledge and to leave this menu.

## Winter/Summer Changeover

This menu is only visible when the automatically changeover of daylight saving is enabled. Pressing SET lets the user edit the time/date of the changeover as described in section "Time & Date" but there is one peculiarity:

Beginning and ending of daylight saving may either be defined by exact dates for a single year or using an algorithm which allows the DU70 to recompute the effective dates year by year.

The example beside shows how to enter the first case:

The day-of-week does not need to be specified and therefore is displayed as wildcard (\*). The time/date of next years changeover has to be entered as well (year by year).

**30.03.97 \* 02:00:00**

In the second case the day-of-week must be specified. Then, starting from the configured date, daylight saving starts the first day which matches the configured day-of-week.

The example shows what has to be entered when daylight saving has to start the last sunday in march every year:

The year (\*\*) does not need to be specified because the changeover algorithm is valid for all further years, too.

**25.03.\*\* 7 02:00:00**

## Summer/Winter Changeover

The Summer/Winter menu appears after ending the Winter/Summer menu by pressing MENU and is to be edited as well.

The example beside shows how to enter a fixed time/date for a single years daylight saving end:

The time/date of next years changeover has to be entered as well (year by year).

**26.10.97 \* 03:00:00**

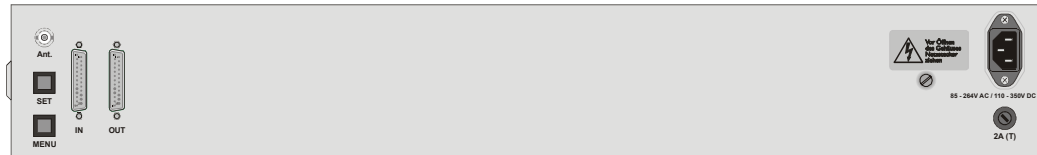
When daylight saving has to end the last sunday in october every year the following has to be entered: (day-of-week: 1 = monday, 7 = sunday).

**25.10.\*\* 7 03:00:00**

## Exit

Pressing SET in this menu lets the DU70 change over from the 'set parameters' mode into the normal operation mode. All changes of parameters are valid now.

## Rear View DU70



*Fig.2: Rear Panel View*

<b>IN</b>	Input for preconnected clock or master clock (time strings or pulses per minute)
<b>OUT</b>	Output (time strings or pulses per minute) for further DU70s or other equivalent Displays.
<b>ANT</b>	Antenna input for external ferrite antenna (only DCF77 variant)
<b>Power</b>	Power supply cord (85-264VAC / 120-375VDC)
<b>FUSE</b>	Fuse (2A SB)
<b>MENU/SET</b>	Buttons to configure the DU70

Because it is possible to preconnect clocks in different ways it is necessary to set the jumpers on the main board correctly (see examples Fig.3-6). The factory default setting of the jumpers is: synchronisation by RS232 time strings.

### **CAUTION**

**Pull 230V Power Supply Plug before opening the Case**

## **Rear Panel Connectors**

Name	Type	Signal	Cable
IN	25 pin SUB-D	RS232	shielded data line
OUT	25 pin SUB-D	RS232	shielded data line
ANT	BNC	77,5kHz	shielded coaxial line
Power	power cord receptacle	85-264VAC / 120-375VDC	power supply cord

## **CE Label**



This device conforms to the directive 89/336/EEG on the approximation of the laws of the Member States of the European Community relating to electromagnetic compatibility.

# Connection Exaples

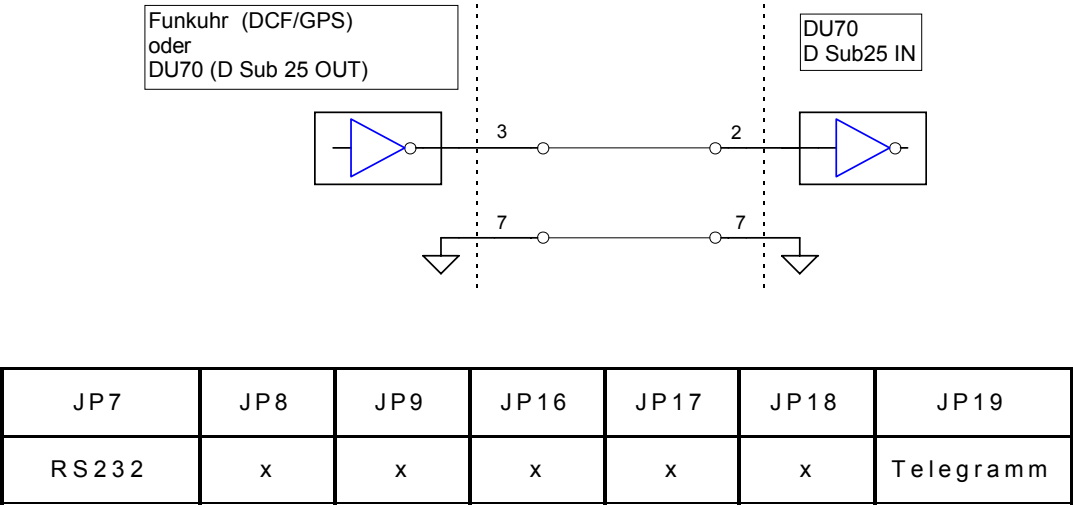


Fig.3: Jumper settings for operating mode: 'Synchronisation by RS232'

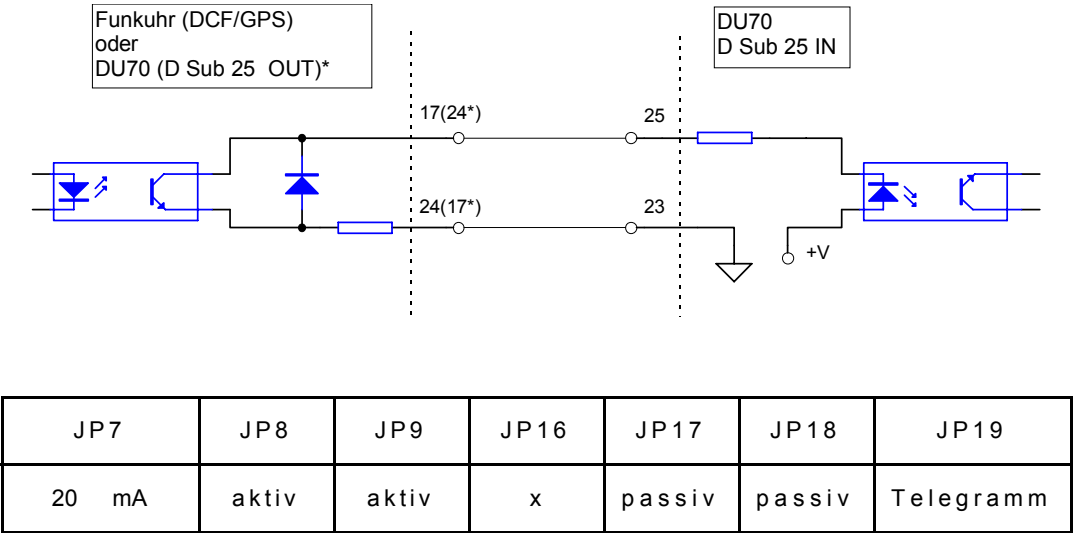


Fig.4: Jumper settings for operating mode: 'Synchronisation by 20mA Current Loop' with passive output onto active input

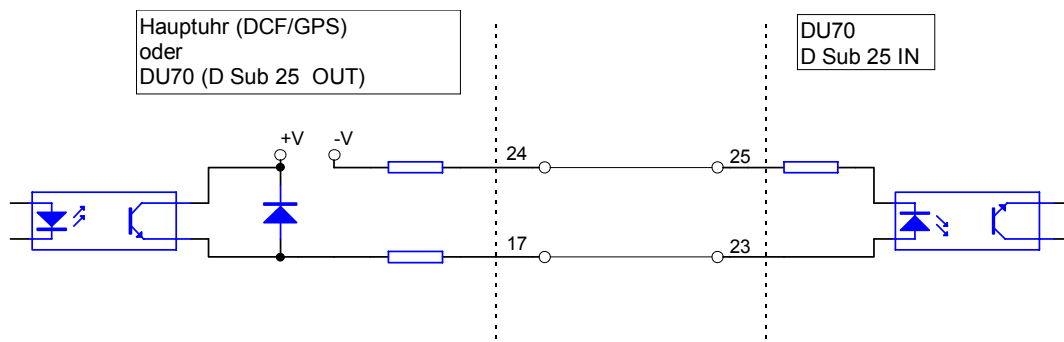


Fig.5: Jumper settings for operating mode: 'Synchronisation by 20mA Current Loop' with active output onto passive input

JP7	JP8	JP9	JP16	JP17	JP18	JP19
20 x mA	passiv	passiv	x	aktiv	aktiv	Temperaturem

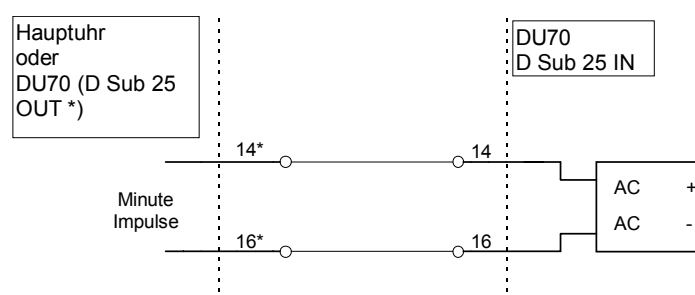


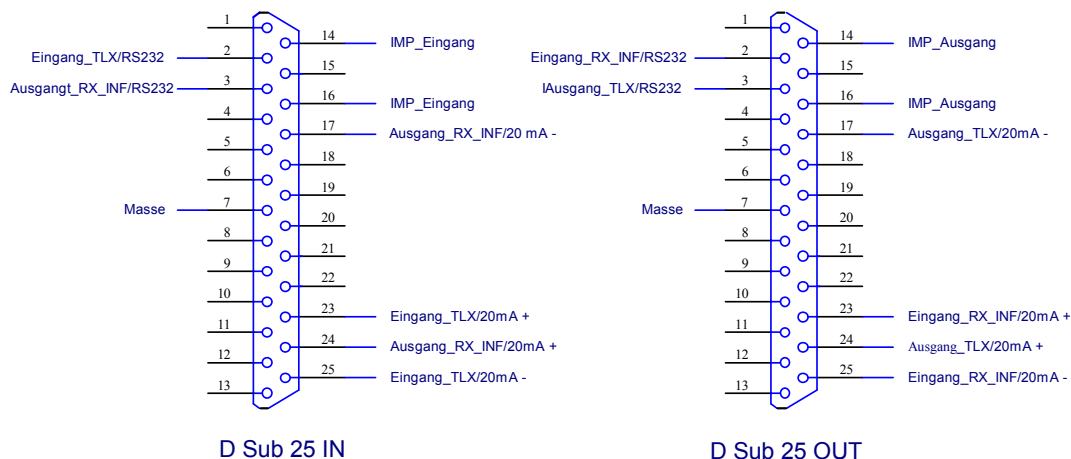
Fig.6: Jumper settings for operating mode: 'Synchronisation by Pulses per Minute'

## Pin Assignments of SUB-D Connector IN

- 2 Input Time Strings - RS232
- 3 Output RX\_INF - RS232
- 7 Ground
- 14 Input Pulses per Minute
- 16 Input Pulses per Minute
- 17 Output RX\_INF - 20mA -
- 23 Input Time Strings - 20mA +
- 24 Output RX\_INF - 20mA +
- 25 Input Time Strings - 20mA -

## Pin Assignments of SUB-D Connector OUT

- 2 Input RX\_INF - RS232
- 3 Output Time Strings - RS232
- 7 Ground
- 14 Output Pulses per Minute
- 16 Output Pulses per Minute
- 17 Output Time Strings - 20mA +
- 23 Input RX\_INF - 20mA +
- 24 Output Time Strings - 20mA +
- 25 Input RX\_INF - 20mA +



**Fig.7: Pin Assignments of SUB-D Connectors IN and OUT**  
(DCF77 variant: The DSub connector (IN) at the rear panel has no effect!)



## Technical Specifications:

### OPERATION

MODE:                   - as free running quartz clock with internal RTC  
                          - as slave clock synchronized by radio clock or master clock  
                          with serial time strings or pulses per minute  
                          - as radio clock with integrated DCF77 receiver (option)

DISPLAY:               LED Dot Matrix Display (80 x 7 dots, 610mm x 55mm)

INPUTS:                RS232 or 20mA current loop (passive/active) or pulses per  
                          minute (pulse voltage: 48V max.);  
                          DSub25 connector

OUTPUTS:              RS232 or 20mA current loop (passive/active) or pulses per  
                          minute (pulse voltage: as adjoining on input);  
                          DSub25 connector

BAUDRATE:             9600 baud

FRAMING:              7E2

TIME STRING:          see "Format of the Meinberg Standard Time String"

BUFFERING:            In case of supply voltage failure the on-board RTC keeps the  
                          time based on XTAL for more than 10 years.

### POWER

REQUIREMENTS: 85-264VAC, 50/60Hz / 120-375VDC, approx. 22VA

FUSE:                  2A(SB)

### PHYSICAL

DIMENSION:           682mm x 100mm x 60mm

WEIGHT:               3,9kg

## Format of the Meinberg Standard Time String

The Meinberg Standard Time String is a sequence of 32 ASCII characters starting with the STX (start-of-text) character and ending with the ETX (end-of-text) character. The format is:

**<STX>D:*dd.mm.yy*;T:w;U:*hh.mm.ss*;uvxy<ETX>**

The letters printed in *italics* are replaced by ASCII numbers whereas the other characters are part of the time string. The groups of characters as defined below:

**<STX>**     Start-Of-Text (ASCII code 02h)

*dd.mm.yy*   the current date:

*dd*   day of month        (01..31)

*mm*   month                (01..12)

*yy*   year of the century (00..99)

*w*            the day of the week        (1..7, 1 = Monday)

*hh.mm.ss*   the current time:

*hh*   hours                (00..23)

*mm*   minutes              (00..59)

*ss*   seconds              (00..59, or 60 while leap second)

*uv*           clock status characters:

*u*:    '#' clock has not synchronized after reset

        ' ' (space, 20h) clock has synchronized after reset

*v*:    '\*' DCF77 clock currently runs on XTAL

        ' ' (space, 20h) DCF77 clock is sync'd with transmitter

*x*            time zone indicator:

    'U'   UTC    Universal Time Coordinated, formerly GMT

    ' '   MEZ    European Standard Time, daylight saving disabled

    'S'   MESZ   European Summertime, daylight saving enabled

*y*            announcement of discontinuity of time, enabled during last hour before discontinuity comes in effect:

    '!'   announcement of start or end of daylight saving time

    'A'   announcement of leap second insertion

    ' '   (space, 20h) nothing announced

**<ETX>**     End-Of-Text (ASCII code 03h)

# Jumper Arrangement

Default jumper settings on the board:

JP7	RS232
JP8	active
JP9	active
JP16	no
JP17	passive
JP18	passive
JP19	Time String

## Jumper Settings:

- JP7 Time String: RS232 / 20 mA
- JP8 Input of Time String (20 mA Current Loop): active / passive
- JP9 Input of Time String (20 mA Current Loop): active / passive
- JP16 automatically Changeover of Daylight Saving: Open - No / Set - Yes
- JP17 Output of Time String (20 mA Current Loop): active / passive
- JP18 Output of Time String (20 mA Current Loop): active / passive
- JP19 Time String / Pulse Mode

In case of DCF77 variant the following jumpers have no effect: JP7, JP8, JP9 and JP19.

